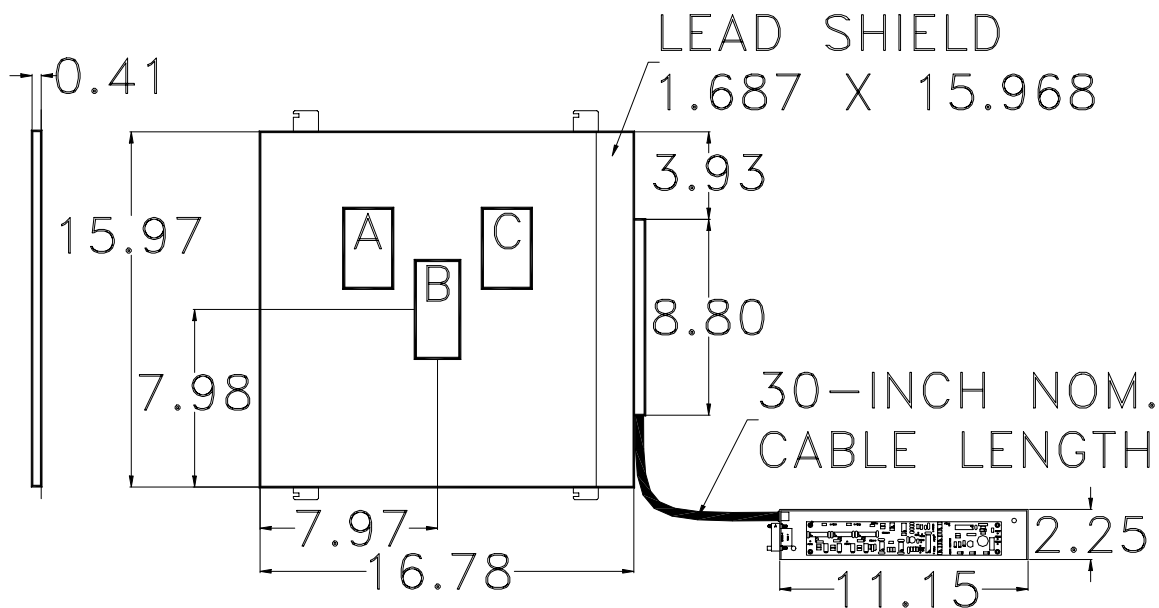


ICX215 (GEHC P/N 2331090 and 2331095)
Three-field Ionization Chamber
Calibration Procedure for Pre-Amplifier board 61156A

The model ICX215 is intended for use with the 8835, 8735, 8535 and the Legacy Intelligent Spot Film Device when replacing GEHC P/N 2331090, 2331095, 2224773, 2225330, 46-250767G1, 46-250767G2 or 46-303850G1.



WARNING:

- This service manual is available in English only.
- If a customer's service provider requires a language other than English, it is the customer's responsibility to provide translation services.
- Do not attempt to service the equipment unless this service manual has been consulted and is understood.
- Failure to heed this warning may result in injury to the service provider, operator or patient from electric shock mechanical or other hazards.

This document represents proprietary information originated by Advanced Instrument Development, Inc. and which shall not be disclosed or utilized in any manner detrimental to the company's business.

Advanced Instrument Development, Inc.
 2545 Curtiss St.
 Downers Grove, IL 60515 U.S.A.

Phone: (630) 271-9729
 Ion Chamber Pin Outs:

www.aidxray.com

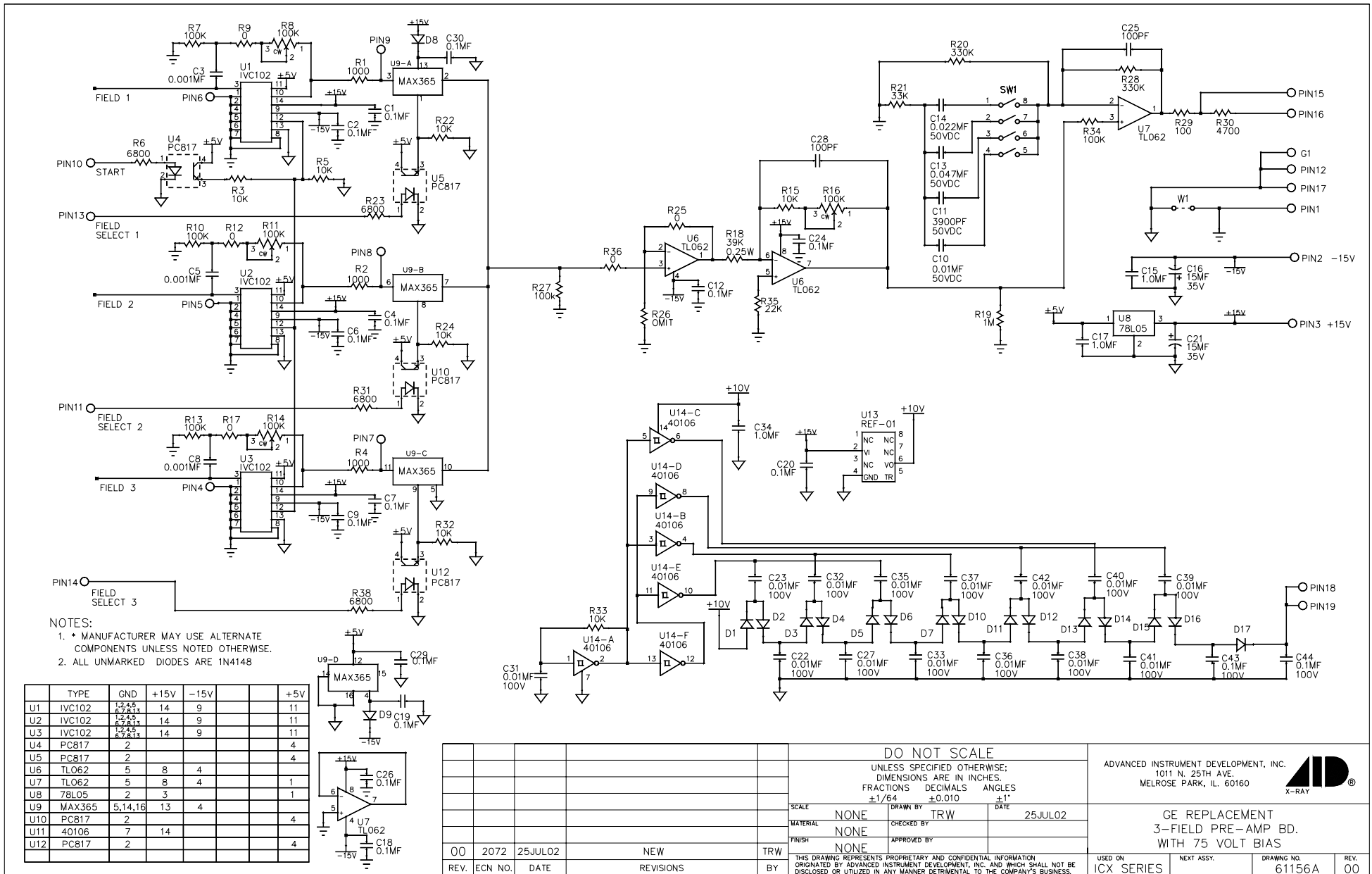
Fax: (630) 271-9995

| 14-PIN AMP M-SERIES CONNECTOR | FUNCTION | WIRE COLOR | 61156A PRE-AMP BOARD |
|-------------------------------------|------------------------------|---------------|----------------------------|
| A | FIELD 3 SELECT | BROWN | 13 |
| B | OUTPUT | WHITE | 15 |
| C | +15VDC | ORANGE | 3 |
| D | FIELD 2 SELECT | YELLOW | 11 |
| E | GND | GREEN | 12 |
| F | -15VDC | BLUE | 2 |
| H | FIELD 1 SELECT | VIOLET | 14 |
| J | RESET (START INTEGRATING) | GRAY | 10 |
| K | SHIELD | BLACK | 1 |
| L | GND | BLACK | 1 |

NOTE: Cable wire colors may not match those inside the pre-amp chassis. Cable pin-out details are available on-line at <http://www.aidxray.com> or by contacting Advanced Instrument Development, Inc.

Acceptable Power Supply Ranges for 61156A Pre-amp:

| Supply Voltage | Measurement Point | Acceptable Range |
|-------------------------------------|----------------------------|------------------------------|
| +15VDC Pos. Input Supply Voltage | 61156A pin 3 | From +14.2VDC to +15.8VDC |
| -15VDC Neg. Input Supply Voltage | 61156A pin 2 | From -14.2VDC to -15.8VDC |
| +5VDC Regulated on board | 61156A C17 (positive lead) | From +4.7VDC to +5.3VDC |
| +75VDC Internal Bias Voltage | 61156A PINS 18 & 19 | From +65VDC to +85VDC |



DO NOT SCALE

UNLESS SPECIFIED OTHERWISE;
DIMENSIONS ARE IN INCHES.
FRACTIONS DECIMALS ANGLES
±1/64 ±0.010 ±1°

| | | | | | |
|----------|------|-------------|-----|------|---------|
| SCALE | NONE | DRAWN BY | TRW | DATE | 25JUL02 |
| MATERIAL | NONE | CHECKED BY | | | |
| FINISH | NONE | APPROVED BY | | | |

ADVANCED INSTRUMENT DEVELOPMENT, INC.
 1011 N. 25TH AVE.
 MELROSE PARK, IL. 60160

GE REPLACEMENT
3-FIELD PRE-AMP BD.
WITH 75 VOLT BIAS

| | | | | |
|------|---------|---------|-----------|-----|
| 00 | 2072 | 25JUL02 | NEW | TRW |
| REV. | ECN NO. | DATE | REVISIONS | BY |

THIS DRAWING REPRESENTS PROPRIETARY AND CONFIDENTIAL INFORMATION ORIGINATED BY ADVANCED INSTRUMENT DEVELOPMENT, INC. AND WHICH SHALL NOT BE DISCLOSED OR UTILIZED IN ANY MANNER DETRIMENTAL TO THE COMPANY'S BUSINESS.

| | | | |
|------------|------------|-------------|------|
| USED ON | NEXT ASSY. | DRAWING NO. | REV. |
| ICX SERIES | | 61156A | 00 |